



# **Installing Your Multifunction to Your Network for the First Time**

**Cableless setup**

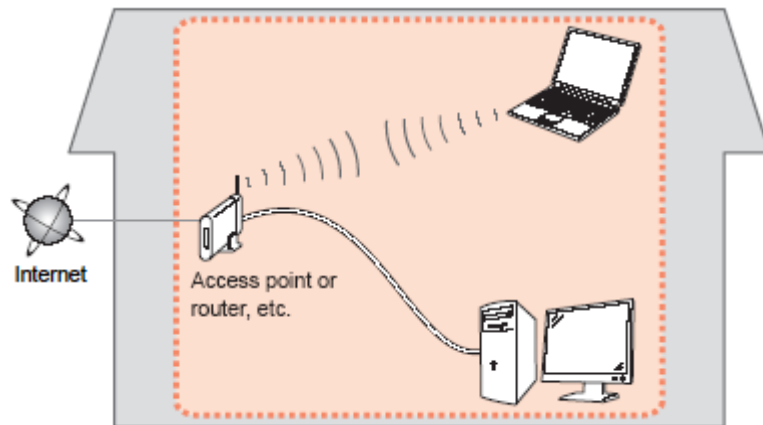
**PIXMA MX532**

**Mac OS**

# Preparing to Connect the Multifunction To the Network

## Network Requirements

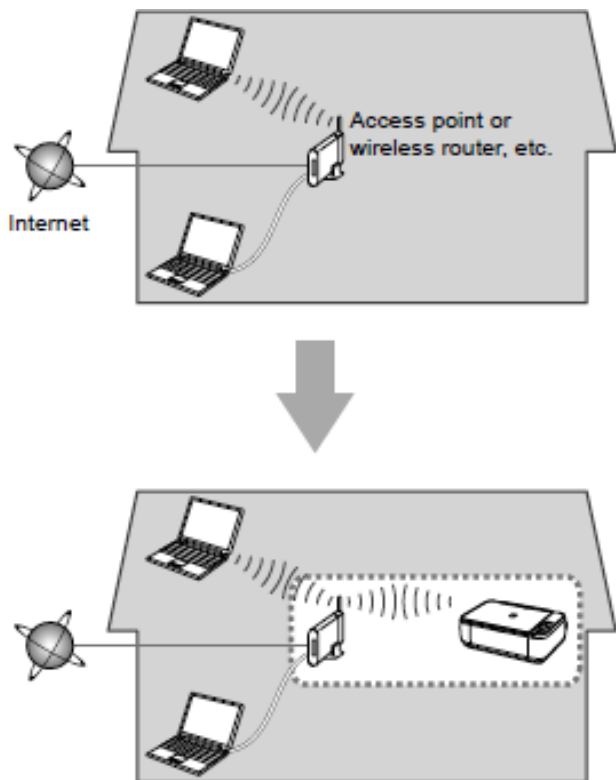
Before connecting the machine to the network, make sure that configuration of the computer and access point or router is complete, and that the computer is connected to the network.



## Wireless Connection

Before connecting the machine to the network, the computer needs to be connected to the network. Make sure that configuration of the computer and access point or router is complete.

# Preparing to Connect the Multifunction To the Network



## Notes on Network Connection

- The configuration, router functions, setup procedures and security settings of the network device vary depending on your system environment. For details, refer to your device's instruction manual or contact its manufacturer.
- In an office setup, consult your network administrator
- If you connect to a network that is not protected with security measures, there is a risk of disclosing data such as your personal information to a third party.
- Place the machine and computer on the same network segment.

# Installing the Drivers & Software

## Software Installation

To use the machine by connecting it to a computer, software including the drivers needs to be copied (installed) to the computer's hard disk. Installation time varies depending on the computer environment or the number of application software to be installed.

### **IMPORTANT**

- Log on as the administrator (or a member of the Administrators group).
- Quit all running applications before installation.
- Do not switch users during the installation process.
- Internet connection may be required during the installation. Connection fees may apply. Consult the internet service provider.
- It may be necessary to restart your computer during the installation process. Follow the on-screen instructions. The installation resumes once your computer has restarted.
- If the firewall function of your security software is turned on, a warning message may appear that Canon software is attempting to access the network. If such a warning message appears, set the security software to always allow access.

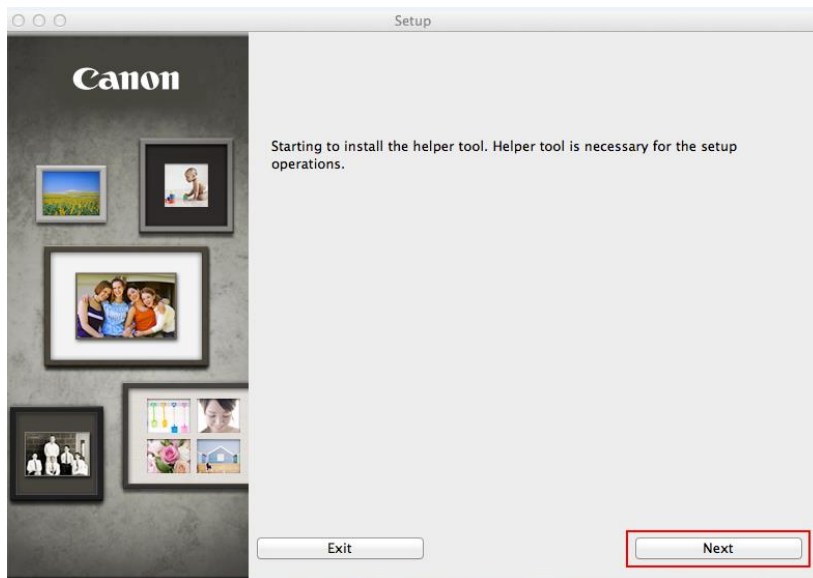
# Installing the Drivers & Software

To begin setup of your PIXMA MX532 on your wireless network, you must first download the software to your computer.  
[Click here to download.](#)

After the file, mac-MX530-1\_0-mcd.dmg, has downloaded successfully, double-click it to start the install procedure.

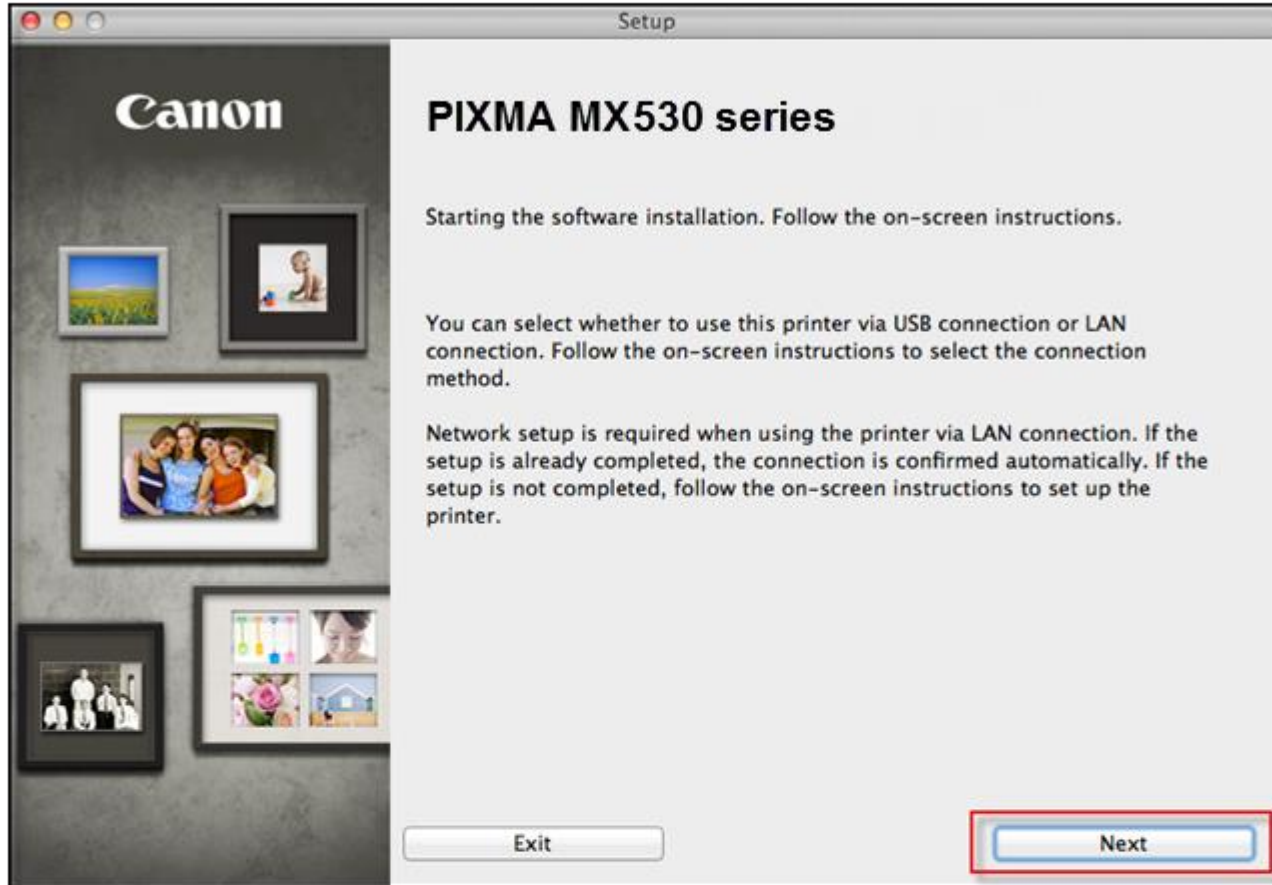
The setup instructions presented in this document describe the “**Cableless Setup**” method which does not require the need to know the SSID (network name), or network passphrase and does not require the printer to be temporarily connected to the computer with a USB cable.

Click **Next** on the first screen. If prompted, enter the Administrative Password to continue.



# Installing the Drivers & Software

Click **Next** on the initial screen



# Installing the Drivers & Software


## - Connecting to the wireless network

On the **Connection Method Selection** screen (1-1) select **Wireless Connection**.

Continue to follow on-screen instructions. Select **Connect to the network** when the **Printer Setup** (2-1) screen appears.


1-1 Connection Method Selection

Select a method to connect the printer.



Wireless Connection

Select this option when using the printer with your computer via **Wi-Fi** (without using a cable), or when sharing the printer with other computers. An **access point** (or wireless **router**) is required.



USB Connection

Select this option when using the printer by connecting it to the computer with a **USB** cable. After software installation, the procedure to connect your computer with the printer appears. Click "USB Connection," then wait until the next screen appears.

2-1 Printer Setup

Connect the printer to the **network**.  
Click [here](#) for notes on **wireless connection**

Start setup

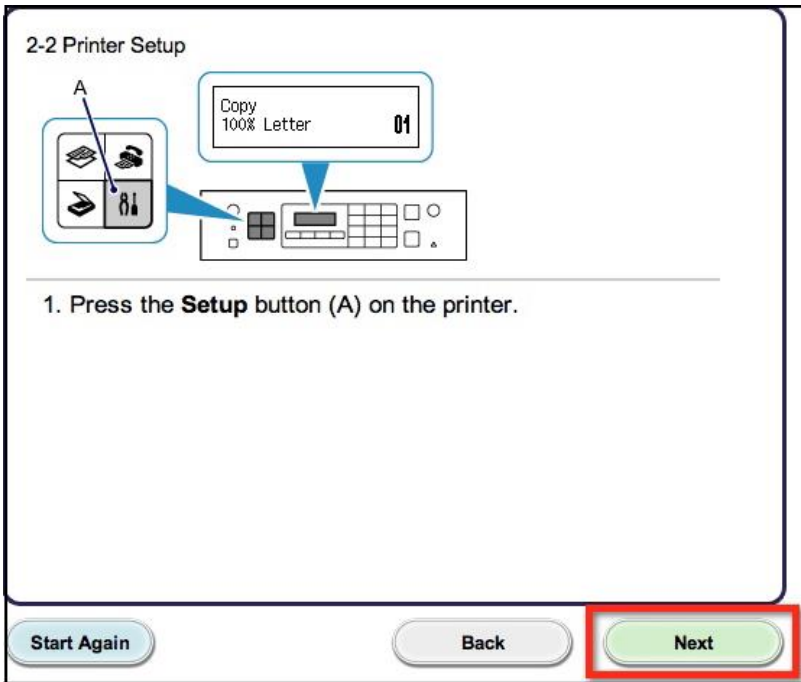
Connect to the network

# Installing the Drivers & Software

## - Connecting to the wireless network

Continue to follow on-screen instructions.

Press the **Setup** button on the printer then click **Next** on the **Printer Setup (2-2)** screen.



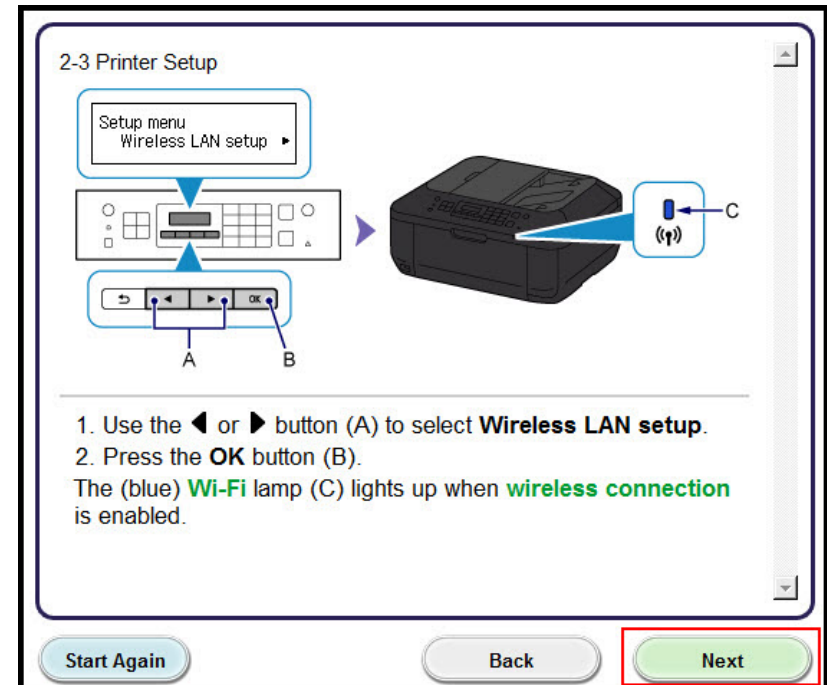
2-2 Printer Setup

Copy 100% Letter 01

1. Press the **Setup** button (A) on the printer.

Start Again Back **Next**

Carefully follow the instruction to select **Wireless LAN setup** on the printer. Press the printer's **OK** button then click **Next** on the **Printer Setup (2-3)** screen.



2-3 Printer Setup

Setup menu Wireless LAN setup

1. Use the ◀ or ▶ button (A) to select **Wireless LAN setup**.  
2. Press the **OK** button (B).  
The (blue) **Wi-Fi** lamp (C) lights up when **wireless connection** is enabled.

Start Again Back **Next**



# Installing the Drivers & Software

## - Connecting to the wireless network

Continue to follow the on-screen instructions until the **Setup Procedure Selection** screen (3-1) appears. If your printer's LCD screen is the same as that shown above **Push Button Method** on the **Setup Procedure Selection** screen (3-1), press the printer's **Stop** button. Once your printer's screen is the same as that shown above **Other Methods**, click **Other Methods** on the **Setup Procedure Selection** screen (3-1).

### 3-1 Setup Procedure Selection

The printer will automatically search for compatible **access points**.

Click the method below that matches the screen displayed on your printer.

Press WPS button of the

[Push Button Method](#)

If the Push Button Method screen is displayed on the printer but you are unsure if your access point or **router** supports this technology, press the **Stop** button.

When the printer screen changes from left to right, click [here](#).

Wireless LAN setup  
Standard setup ▶

[Other Methods](#)

"WPS" or "Cableless setup" can be selected in the next step.

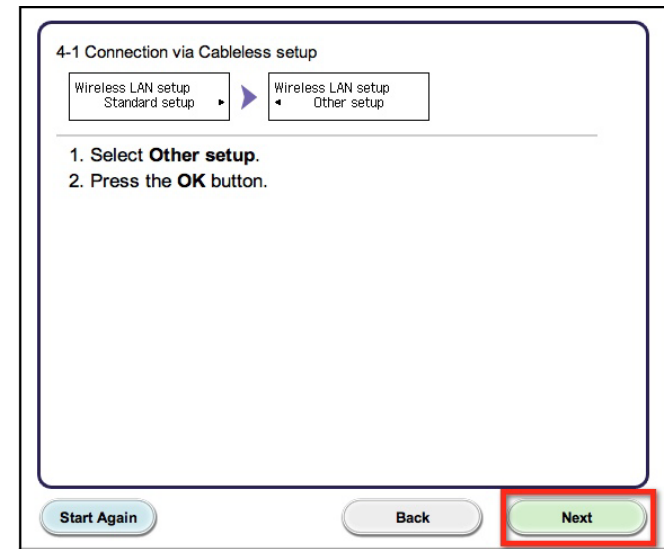
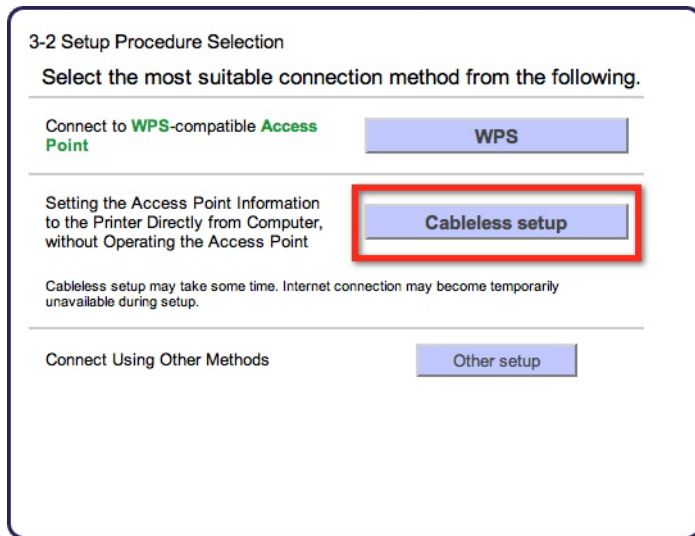
If your access point supports **WPS**, you can perform WPS setup, even if the **Wireless LAN setup** screen is displayed.

# Installing the Drivers & Software

## - Connecting to the wireless network

Select **Cableless setup** on **Setup Procedure Selection** screen (3-2).

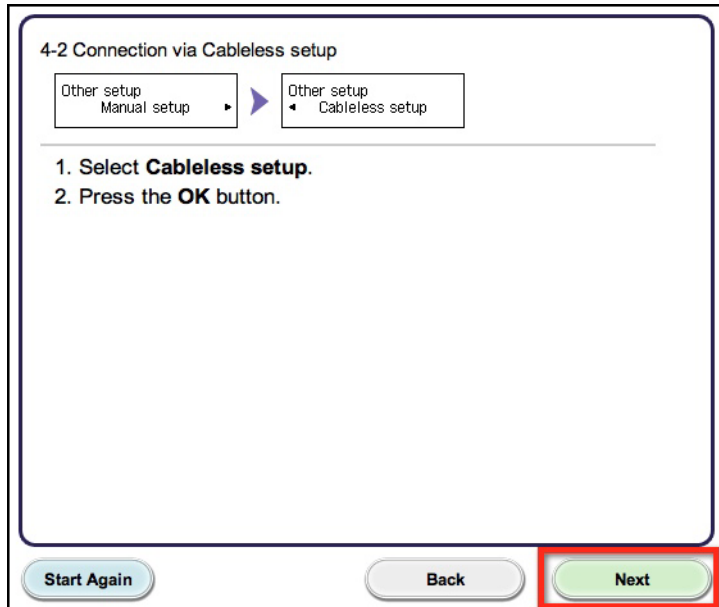
On the printer's LCD, select **Other setup**, then press the **OK** button. Click **Next** on the **Connection via Cableless setup** (4-1) screen



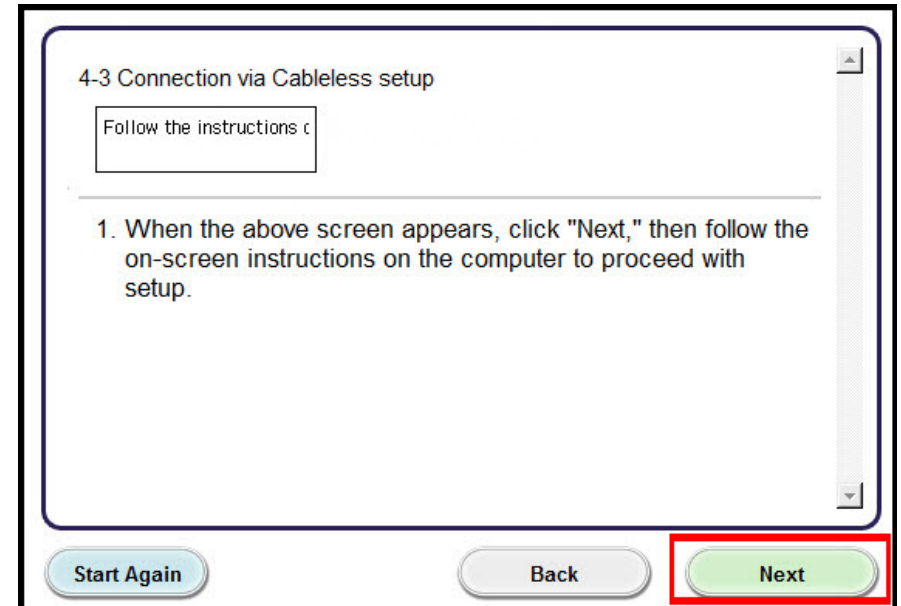
# Installing the Drivers & Software

## - Connecting to the wireless network

Select **Cableless setup** on your printer and press the **OK** button. Click **Next** on the **Connection via Cableless setup** screen (4-2).



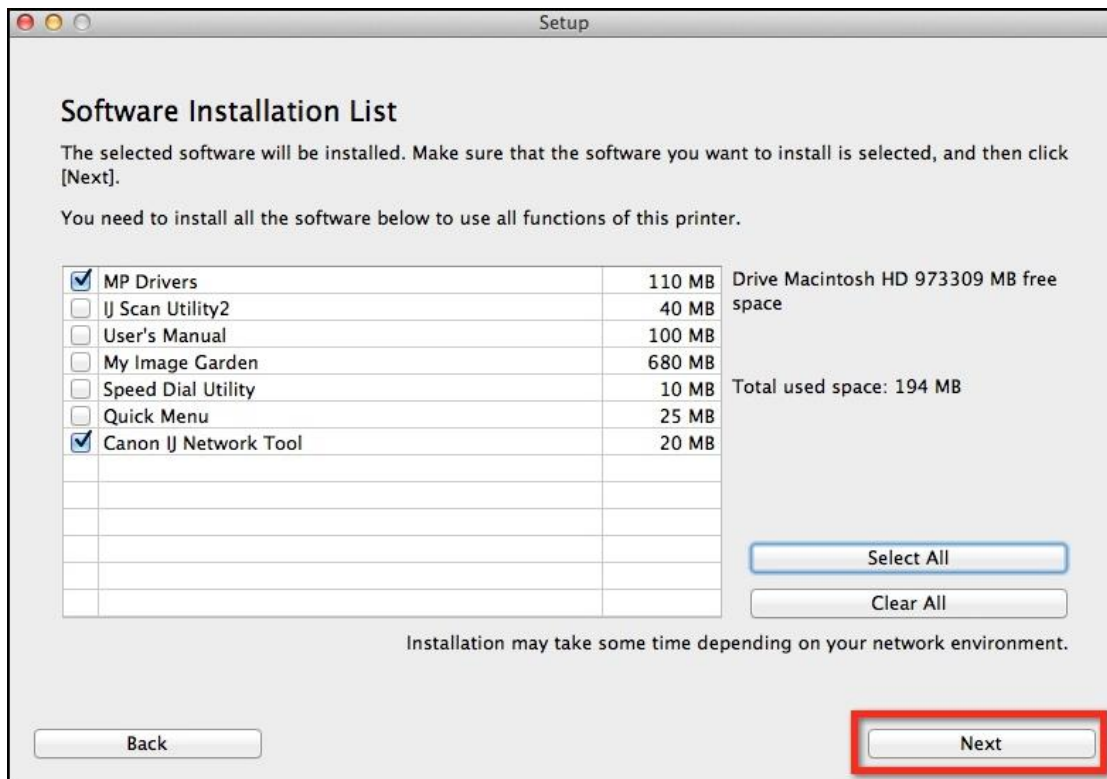
When the “**Follow the instructions...**” message appears on the printer’s LCD, click **Next** on the **Connection via Cableless setup** screen (4-3).



# Installing the Drivers & Software

Continue following on-screen instructions. On the **Software Installation List**, select \*software to install and click **Next**.

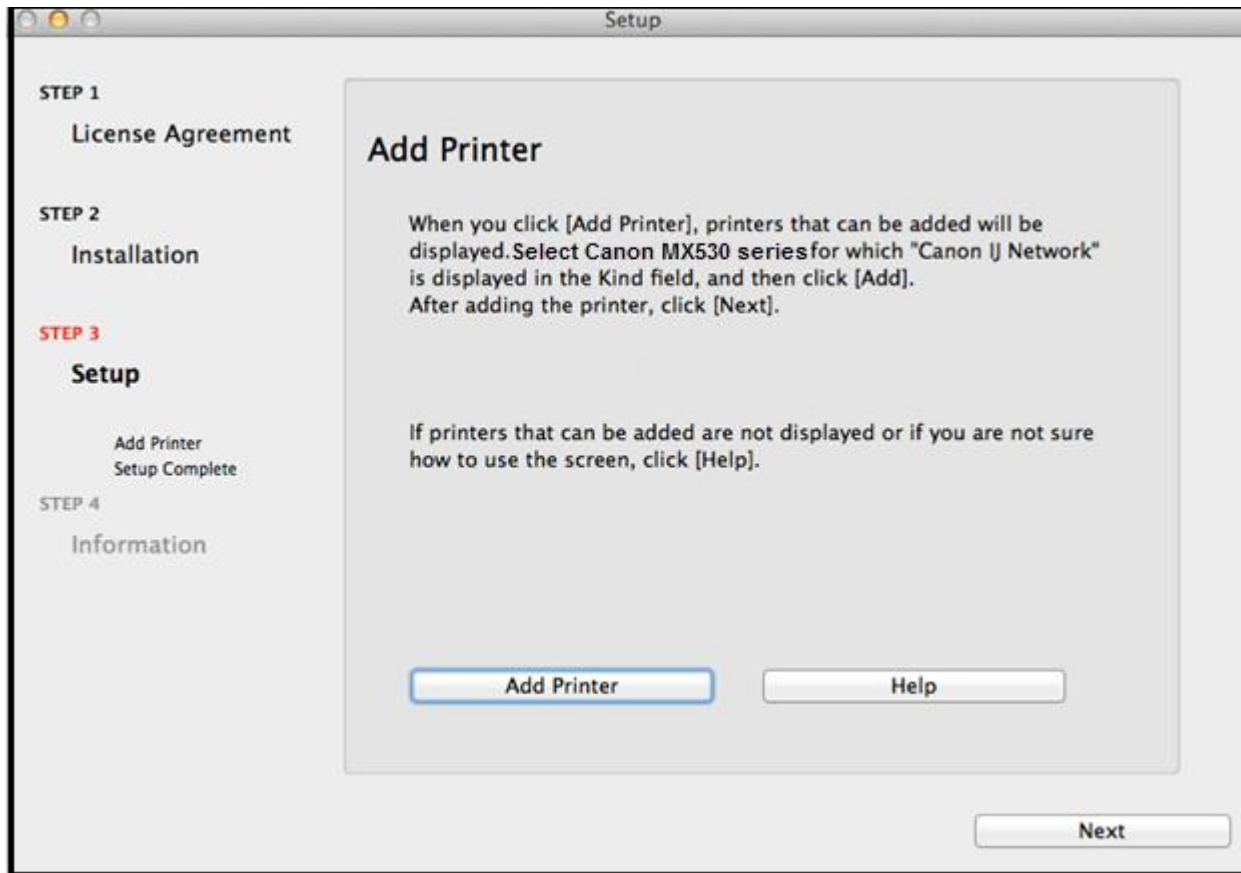
\***MP Drivers** and **Canon IJ Network Tool** are required and cannot be deselected. We recommend installing **IJ Scan Utility2**, **My Image Garden** and **Quick Menu** to take full advantage of the printer's features.



# Installing the Drivers & Software

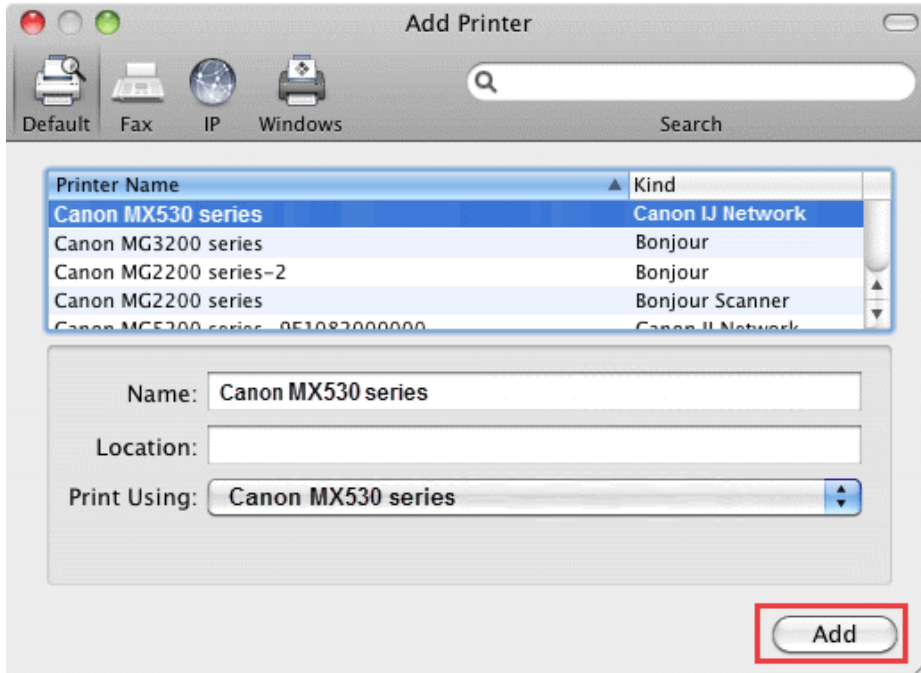
Continue following the on-screen instructions.

When the **Add Printer** screen appears, click **Add Printer**.



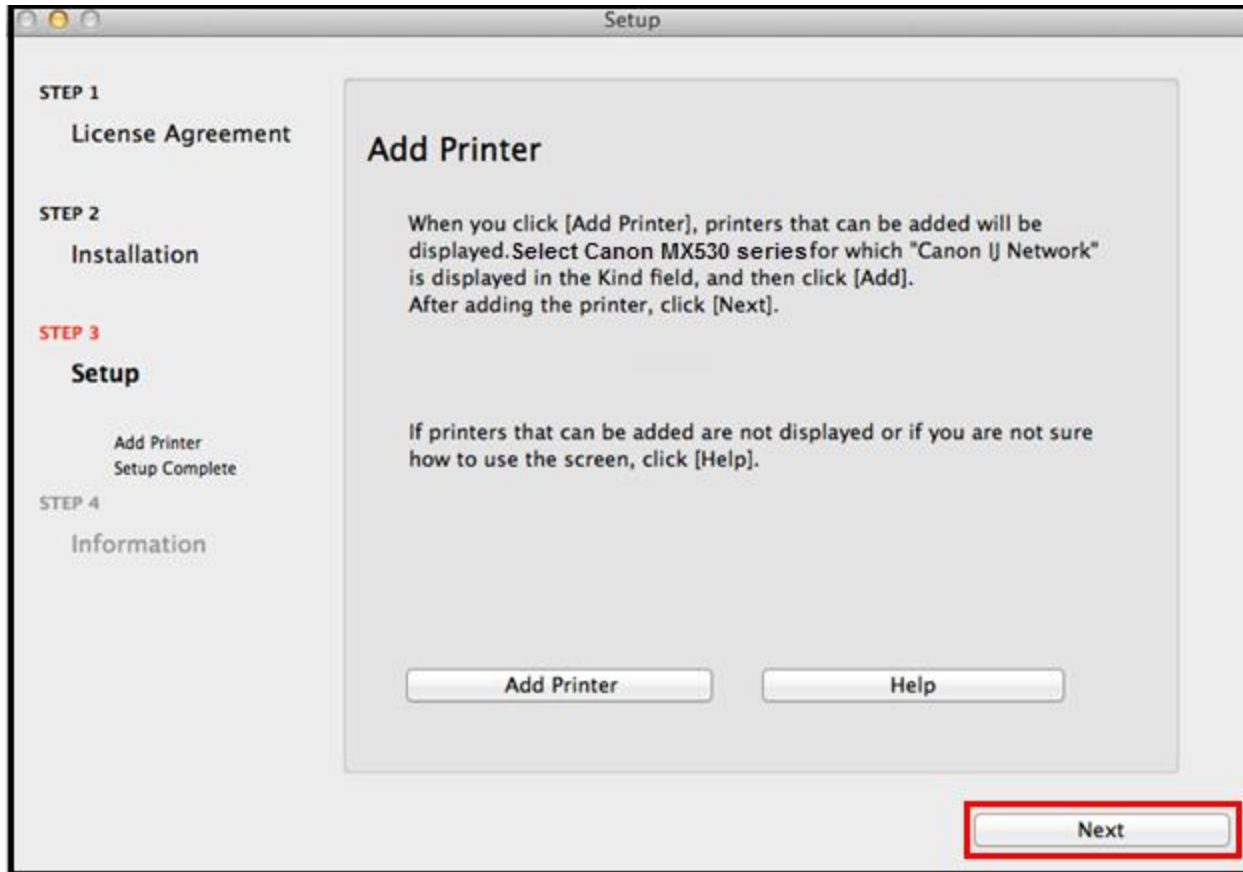
# Adding the Printer

Select the **Canon MX530 series** with **Canon IJ Network** listed in the **Kind** column, then click **Add**.



# Adding the Printer

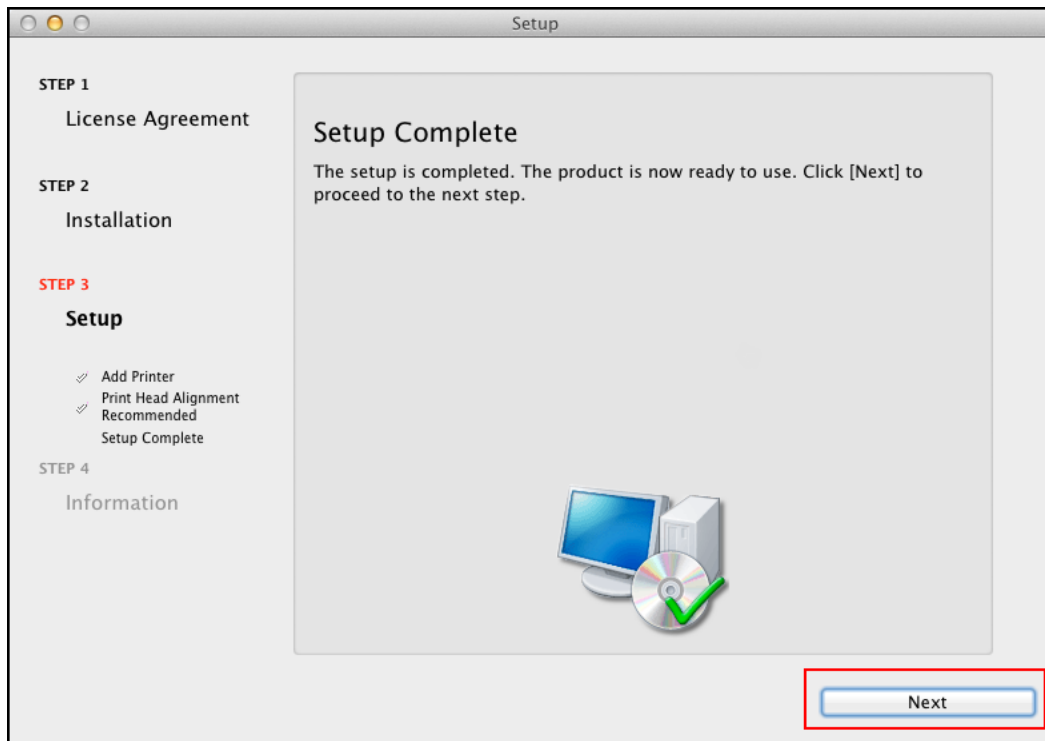
Click **Next** on the **Add Printer** screen



# Completing the Setup

Continue following on-screen instructions.

When the **Setup Complete** screen appears, click **Next**.



At this point, setup of the printer and network is complete. Continue to follow any remaining on-screen instructions to finish and exit the setup program.